

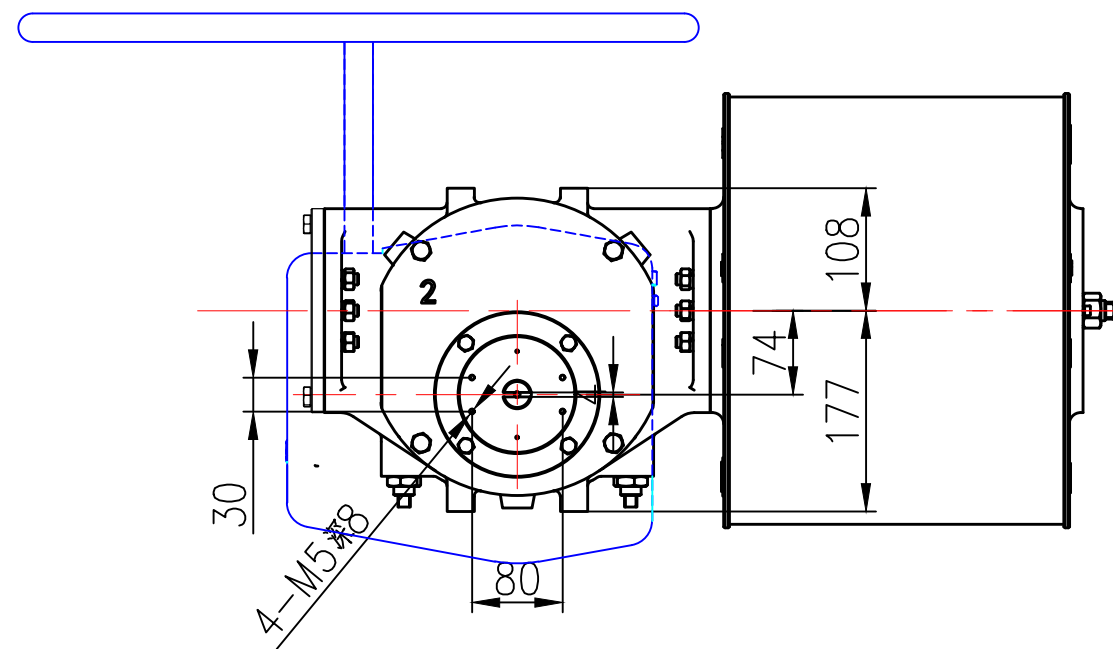
Technical drawing of a mechanical assembly, showing a side view and a cross-section.

Side View Dimensions and Labels:

- 100:** Horizontal distance from the center of the circular component to the vertical centerline.
- 10:** Vertical distance from the top of the circular component to the horizontal centerline.
- 100:** Vertical distance from the horizontal centerline to the bottom of the circular component.
- 94:** Vertical distance from the bottom of the circular component to the bottom of the rectangular block.
- B:** Vertical distance from the top of the rectangular block to the horizontal centerline.
- A:** Horizontal distance from the vertical centerline to the right edge of the rectangular block.
- F:** Force vector acting on the circular component.
- P:** Point of contact or support on the right edge of the rectangular block.
- E:** Direction of gravity, indicated by a downward arrow.

Cross-Section View:

- ϕD :** Diameter of the circular component.
- M-P:** Section line indicating the plane of the cross-section.



									VER		
									VTORK Technology		
	NAME	SIGN	DATE			TILE VTS Pneumatic Yoke Type Actuator					
DRAWN											
CHECK											
APPD.											
						DRAWING NO. VTS2-xxx-FO-MW			A3		
				WEIGHT		SCALE			SHEET		